



GAT MONTHLY MEMBERSHIP PROGRESS REPORT

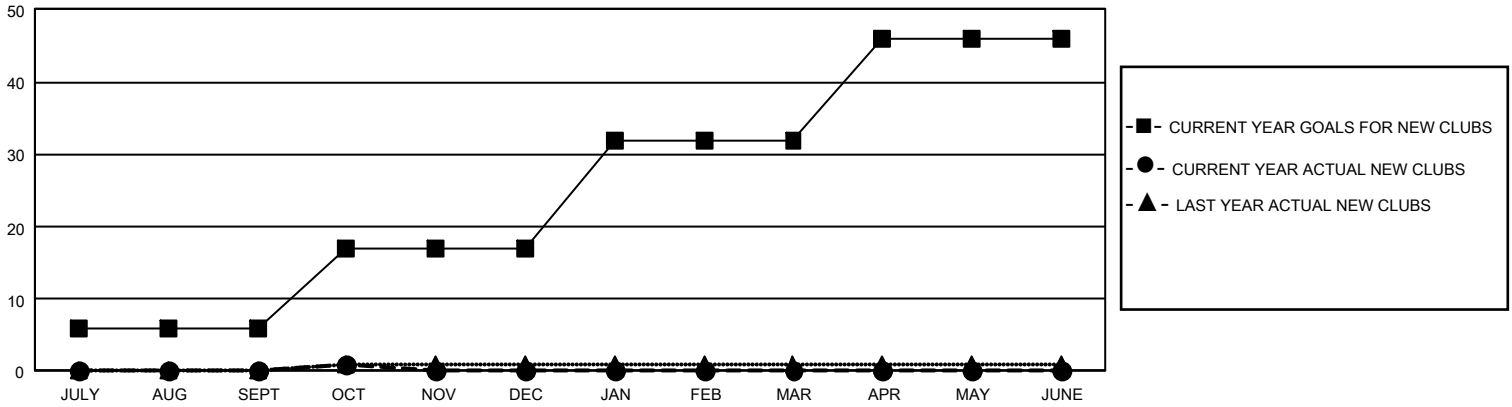
Results as of: 10/31/2022

GMT Constitutional Area 4, Group A

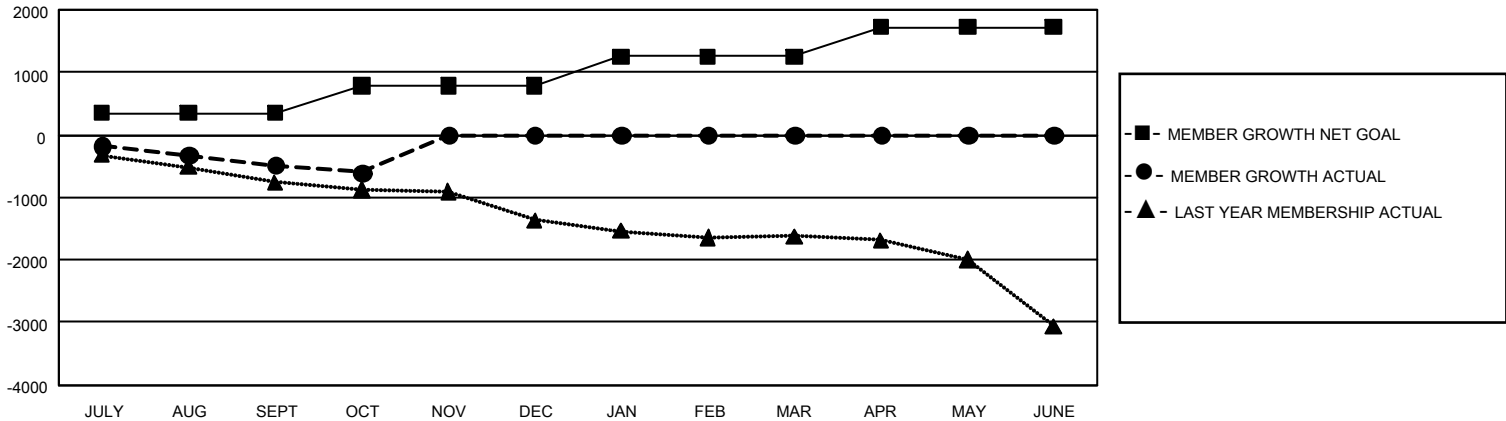
REPORT DOES NOT INCLUDE CLUBS IN UNDISTRICTED AREAS.

Clubs				Members			
RESULTS FOR 2022-2023				RESULTS FOR 2022-2023			
QUARTER	NEW CLUB GOAL	NEW CLUBS	DROPPED CLUBS	QUARTER	MEMBER GROWTH NET GOAL	MEMBER GROWTH ACTUAL	DROPPED MEMBERS ACTUAL (including transfers)
JULY/AUG/SEPT	18	0	24	JULY/AUG/SEPT	346	387	810
OCT/NOV/DEC	33	1	1	OCT/NOV/DEC	442	287	396
JAN/FEB/MAR	45	0	0	JAN/FEB/MAR	466	0	0
APR/MAY/JUNE	42	0	0	APR/MAY/JUNE	466	0	0

GOALS AND ACTUAL NEW CLUBS CUMULATIVE



GOALS AND ACTUAL MEMBERS CUMULATIVE



DROPPED CLUBS: 25 DROPPED MEMBERS DECEASED 165 CLUB CANCELLED 38 OTHER 1,005 TOTAL 1,208	381 CLUBS OF 1,965 ADDED 1 OR MORE NEW MEMBERS	GENDER DISTRIBUTION MALE 32,333 (77.08%) FEMALE 9,611 (22.91%) NON BINARY 0 (0.00%) PREFER NOT TO ANSWER 1 (0.00%)
	CLICK HERE FOR CUMULATIVE MEMBERSHIP DATA	TOTAL FAMILY UNIT MEMBERS 1,577 FAMILY MEMBERS PAYING HALF DUES 783